

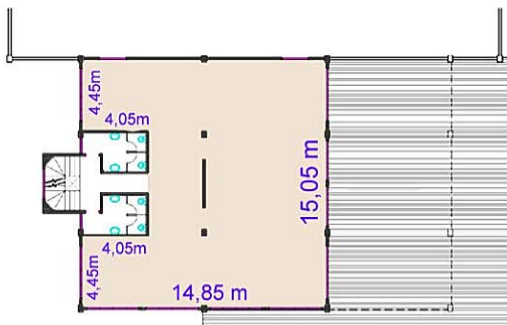
Galpão Industrial 1.930 m² em condomínio Industrial fechado

Endereço: **Rua Artico, 327**
Industrial Granja Viana
Cotia S.P.

Acesso pela Estrada dos Estudantes
na altura do Km 28,5 da Rodovia Raposo Tavares



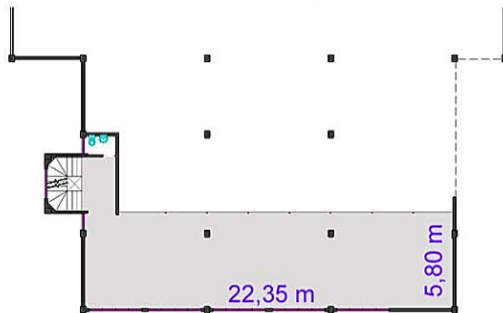
Planta superior 241,08 m²



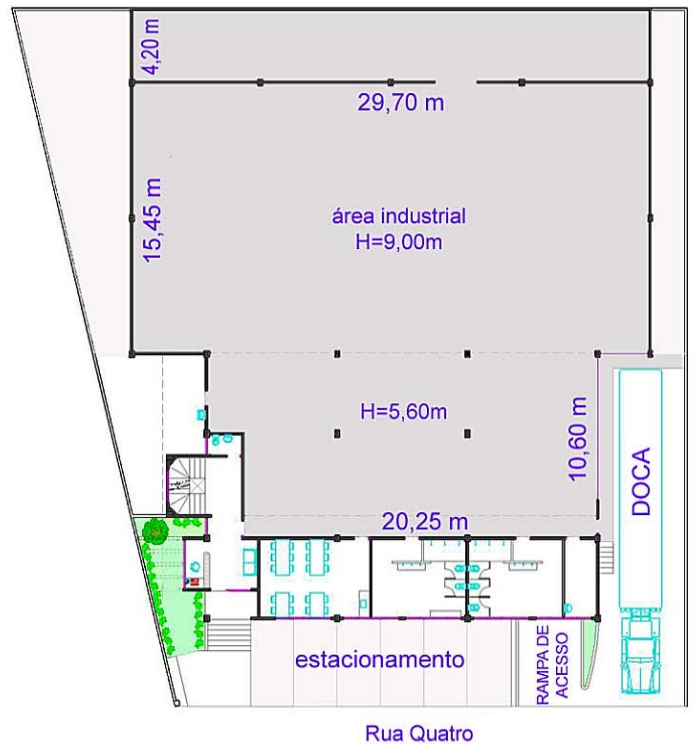
Planta Cobertura 156,80 m²



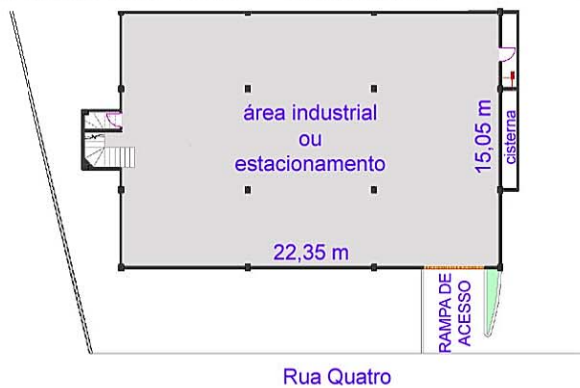
Planta mezanino 153,80 m²



Planta térreo 1.007,61 m²



Planta sub-solo 366,95 m²



IMOBILIÁRIA _____
TELEFONE _____

CORRETOR _____
e-mail _____